

Camping



Clarcona Horse Park
Kelly Park/Camp Joy
Magnolia Park
Moss Park
Trimble Park

Respect for NATURE...

Rediscover your connection to nature in one of our beautiful Orange County Parks and Recreation campgrounds. Whether it's feeling the sun on your face, learning how things grow or enjoying the awe-inspiring beauty of a summer's day, nature's innovation sustains us from the inside out. Spending time outside reminds us of our unique place in the world.

ORANGE
COUNTY
PARKS &
RECREATION

Camping at Orange County Parks and Recreation



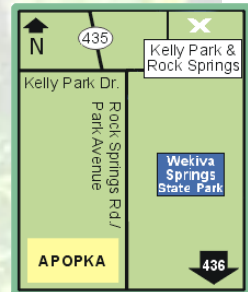
Clarcona Horse Park

3535 Damon Road
Apopka, FL 32703
407-254-9010

Kelly Park/Camp Joy

400 East Kelly Park Road
Apopka, FL 32712
407-254-1902

KellyCamping@ocfl.net



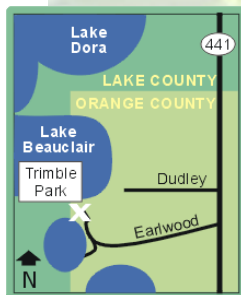
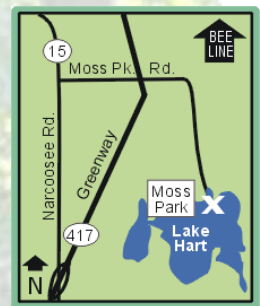
Magnolia Park

2929 South Binion Road
Apopka, FL 32703
407-254-9046

Moss Park

12901 Moss Park Road
Orlando, FL 32832
407-254-6840

MossCamping@ocfl.net



Trimble Park

5802 Trimble Park Road
Mt. Dora, FL 32757
407-254-1982

TABLE OF CONTENTS

General Park Rules and Regulations	4-7
Fees	8
Clarcona Horse Park Camping	9-10
• Available Camping	
• Park Information	
• Park Campground Map	
• Park Map	
Kelly Park Camping	11-13
• Available Camping	
• Park Information	
• Park Campground Map	
• Park Map	
Magnolia Park Camping	14-16
• Available Camping	
• Park Information	
• Park Campground Map	
• Park Map	
Moss Park Camping	17-19
• Available Camping	
• Park Information	
• Park Campground Map	
• Park Map	
Trimble Park Camping	20-21
• Available Camping	
• Park Information	
• Park Campground Map	
• Park Map	
Group Camping	22
Pet Camping (Clarcona Horse, Magnolia & Trimble Only)	23-25
Examples of Approved Recreational Vehicle/Equipment	26
Low-speed Vehicles (LSVs)	27

GENERAL PARK RULES AND REGULATIONS

Campsites

- Campsites are reserved on a first-come, first-served basis. Full payment required at the time of reservation.
- Individual sites have electric and water connections, a picnic table and grill.
- Electricity and water charges are included in your camping fees, regardless of usage.
- Do not exceed the listed electrical amperage of your campsite. You are liable for damages to personal or County property caused by any modification of cords/fixtures or exceeding maximum electrical allowance. Do not tamper with electrical boxes.

Occupancy - Individual

- Individual campsites are for one single family household or a group of up to six unrelated persons.
- Campsite occupancy is limited to one of the following combinations:
 - i. One (1) primary camping unit (motor home, pop-up, camper van), one (1) automobile and one (1) tent
 - ii. Two (2) tents and two (2) automobiles
 - iii. One (1) pickup truck with mounted camping rig, one (1) automobile and one (1) tent
- Additional automobiles and trailers may be accommodated in a designated area outside of the campground for an additional per night fee.

Occupancy - Family

- Family campsites, available at Kelly Park and Moss Park, accommodate up to 12 or 18 campers. Occupancy maximums based on campsite availability/size. Contact sites directly for availability.

Occupancy - Group

- Orange County Campgrounds offer group camping opportunities for groups of 20 individuals or more.
- Primitive and group sites are for tents only, no vehicles are permitted.
- Primitive and group sites do not offer electricity. Generators are not permitted.

Reservations

- Over-the-phone credit card reservations can be made daily during business hours by contacting the site. **Online reservations are highly encouraged (online reservations are available at midnight).**

Online Camping Reservations

Orange County Parks and Recreation Campgrounds accept online reservations for individual campsites, no more than 45-days prior to the first day of your stay. To make online camping reservations you will need a unique Username and Password:

- If you already know your Username and Password, you can log in at the link below and continue with your reservation.
- If you do not already have a Username and Password and have not camped with us, please create your Username and Password in the system by registering for a new account at the link below.
- Note: If you have camped in one of our Campgrounds in the past, you are most likely already in our system and will not be able to create a Username and Password. Please call the park to obtain your Username and Password before visiting our online reservation system.

To make a camping reservation, visit our [Online Camping reservation page](#).

If you are interested in renting a family site (Moss and Kelly Parks only), handicap sites, group sites or pavilions please call the park directly to make your reservation. Subject to availability.

- Changes or cancellations to a reservation require staff assistance, please contact the park for which the reservation was made, and staff will assist you.
- All fees must be paid in full at the time of reservation.
- To extend your stay, please check with the office prior to 11:00 a.m. on your check out date. Subject to availability.

Check-in

- Check-in time is 2:00 p.m. All Campers must check-in and be set-up prior to park close.
- The check-in process must be completed by the camper whose name appears on the receipt.

Check-out

- Check-out time is 12:00 p.m. (noon)
- To extend your stay, please check with the office prior to 11:00 a.m. on your check out date. Subject to availability.
- The campsite must be vacated at check-out time and all motor vehicles, recreational vehicles and personal property must be removed from the site.
- Plan ahead and give yourself sufficient time to pack and load your belongings before 12:00 p.m. (noon) so that others may check-in promptly.
- Failure to vacate the site on time may result in eviction. Following eviction and to prepare the site for arrival/check in of reserved campers, all vehicles and property remaining on site may be removed or towed at owners' expense. Property left unclaimed may be considered abandoned property and discarded pursuant to applicable law (FL Statute Chapter 513) and County policy.
- Please stop at the park office or gatehouse to notify staff of your departure.

Limitations

- Campers who stay 4-14 consecutive days at a campground must observe a 60 day leave from that campground before another stay is allowed. Camping on weekends is not restricted and may occur during the 60-day period. Campers are defined as registered guests or their visitors spending at least one overnight stay at the campsite. Weekends are defined as the time period between Friday evening and Sunday afternoon.
- No persons under 18 years of age will be allowed to camp without a responsible adult present.
- Any infraction of Park rules will result in immediate revocation of camping permit-day or night, without a refund.

Vehicles

- Only tagged, insured, and licensed vehicles are allowed to drive in the park.
- All vehicles must remain on approved driving surfaces.
- Any person operating a motorized vehicle, including LSVs, must have a valid driver license.
- Only registered, insured, and licensed vehicles are allowed to drive in the park.
- Low-speed vehicles (LSV) are authorized only when tagged, titled, and insured with personal injury protection (PIP) and property damage liability (PDL) insurance. LSVs may only be operated on park roadways only. Maximum speed of 10 MPH or less. LSVs must be equipped with the appropriate safety equipment (see page 27 for more details).
- Assisted mobility devices defined by the *Americans with Disabilities Act* are permitted in any areas open to pedestrian use. Please notify park staff when operating such a device on park property.
- Campers are not permitted to sleep in their car or in the open. All campers must sleep in a tent or approved recreational/camping vehicle. Examples of approved recreational/camping vehicles can be found on page 26 of this brochure.

3rd Party camping vehicle or equipment

- 3rd Party camping vehicles or equipment are rented, borrowed, or not owned by registered Campers.
- Campers utilizing a 3rd party recreational/camping vehicle or equipment, must supply the 3rd party name and contact information at the time of the reservation.
- Campers are responsible for the actions of the 3rd party personnel while on property.
- Campers are responsible for damage caused by 3rd party personnel or equipment while on property.
- Campers must ensure the campsite is vacated at checkout time, including the appropriate removal of 3rd party Recreational/camping vehicle from the property. Failure to vacate the site will incur additional fees to the camper and may result in loss of camping privileges.

Quiet Hours

- Park quiet hours are 10 p.m. until 8 a.m.

Sanitation

- Wastewater drainage at the campsite is prohibited.
- A sanitary dumping station is provided for gray water and sewage waste at Kelly, Magnolia, Moss, and Trimble Parks. There is no charge for registered campers.
- Dump fee for non-registered campers is \$5.00.
- Washing sinks are provided at the following sites: Magnolia, Moss, Kelly, and Trimble Parks.
- Washing of dishes, food, clothing or other property, and bathing at public water faucets is prohibited.

Food Storage and Wildlife

- **Dangerous wildlife is present**, including alligators, bears, and snakes. Campers and visitors assume all risks of injury or death when utilizing our facilities.
- Do not feed or harass any wildlife.
- All food and garbage must be kept sealed or disposed of properly.
- Florida is known bear habitat. Please be mindful of food storage to prevent human/bear conflicts. Follow staff directions regarding appropriate food storage.

Pets

- Pets are allowed only at Clarcona Horse, Magnolia and Trimble Parks if properly registered. See *Pet Camping*, for more information.

Emergency Procedures

- In the event of an emergency, call 911. A site after hours contact number will be provided to you and noted on your payment receipt upon check-in.
- When available, a campground host or resident sponsor will be designated.

Campfires and Firewood

- No cutting or collecting of firewood. Please bring your own (no Redbay firewood please) or check availability of firewood for purchase at Park office.
- All campfires must be within provided fire rings and may not be left unattended. Do not move fire rings from original locations.
- Firewood may be available for purchase to registered campers during their stay. Please check with park staff prior to or on your arrival as to the availability of wood for sale.
- Fires are only allowed in campsite fire rings/grills. Foraging for burning materials is not permitted.
- Firewood can be purchased from staff in bundles of 25 for \$10.00. Discounts are not available for firewood sales.
- No refunds or credits will be available for unused firewood or wood left at your campsite after checkout.
- Should you wish to bring your own firewood, no Redbay tree firewood is permitted in Orange County Parks. The Redbay Ambrosia Beetle and its associated fungus from Asia is killing native Redbay trees and related species such as sassafras and avocado. The exotic tree-killing pest spreads to new areas through movement of infested wood.

Other

- Alcohol and alcoholic beverages are prohibited on park property.
- Youth groups must have adequate supervision (1 adult for every 10 youth is suggested).
- Swimming areas at designated parks are open only during park operating hours.
- Entering and exiting the park after posted close is a privilege. A gate code will be given at time of check in. Please lock the gate after exiting or entering park premises.
- Only registered campers are permitted in the campground after hours. Daytime guests must vacate the park at normal close of business.
- Hammocks are permitted if supported by a minimum two (2) inch wide strap and hung on trees with a diameter of 8-12 inches. Hammocks cannot encroach on neighboring campsites, nor should they block walkways or paths.
- Other items may not be affixed to trees for any reason.

Programs for Campers

- Planning a trip to Kelly, Magnolia, or Moss Parks? Ask staff about campfire programs or educational classes for groups! Advanced registration required.

FEES

PARK ADMISSION AND PARKING

COST

Moss Park and Kelly Park only	
Per vehicle, up to 2 passengers.....	\$ 3.00
Per vehicle, 3 or more passengers.....	\$ 5.00
Per passenger, for each passenger beyond 8.....	\$ 1.00
Busses and commercial vans, minimum charge.....	\$ 10.00
Bicycle or walking.....	\$ 1.00

CAMPING AND RELATED FEES

Site Rental, per night (County resident).....	\$ 18.00
Site Rental, per night (non-County resident).....	\$ 23.00
Group Tent Camping Fee	
(per person, per night, includes entry fee, minimum 20 campers, non-refundable)....	\$ 3.00
Additional person, per night.....	\$ 2.00
Additional vehicle, per night.....	\$ 3.00
Non-registered sanitary dump fee.....	\$ 5.00
Firewood (when available - bundle of 25).....	\$ 10.00

ADDITIONAL CAMP JOY FEES

Camp Joy Lodges, per person per night, minimum \$60 per bunkroom.....	\$ 5.00
Garnett Counselor Room, per night only with Lodge group in Garnett bunkroom.....	\$ 25.00
Garnett Hall, per day.....	\$ 100.00
Garnett Kitchen, per day only with Garnett Hall rental.....	\$ 75.00
Paradise Hall, per day.....	\$ 100.00

Please see Park staff for information on fees for Park Programs or Facility Rentals

A cancellation fee of one night will be charged for all cancellations received less than three days in advance. A processing fee of \$10.00 or 25%, situation dependent, will be charged for all other refunds. In the case of no show / no call cancellations, all fees are non-refundable.

Senior Citizens (55 years and over) and active military may be allowed a 25% discount against camping fees.

Free Lifetime Entry Pass - A free lifetime entry pass is available to: current military service members; honorably discharged veterans; honorably discharged veterans with a service-connected disability; the surviving spouse or parents of a military service member who died in combat; and the surviving spouse or parent of a law enforcement officer, firefighter, emergency medical technician, or paramedic who died in the line of duty. An application form for Free Lifetime Entry Pass can be obtained at Kelly Park, Moss Park or by contacting Orange County Parks and Recreation. Pass is valid for entry at parks that charge for entry (Kelly, Moss, Downey, Dr. Phillips, and Fort Gatlin Parks).



Clarcona Horse Park

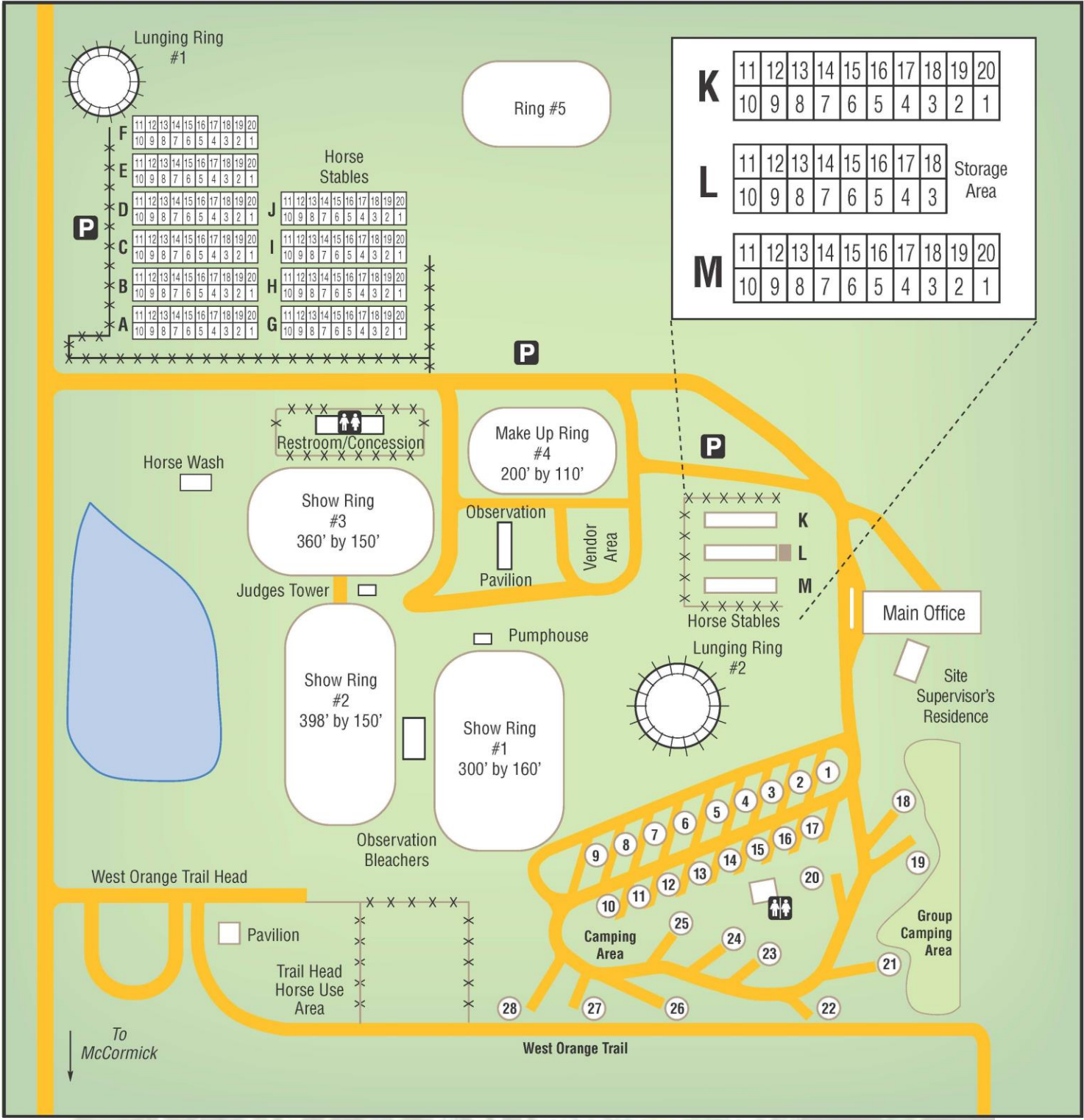
3535 Damon Road
Apopka, FL 32703
407-254-9010

- Available Camping
 - Clarcona Horse Park has 28 RV/tent sites.
 - Camp sites have a picnic table and grill.
 - Water and electricity are included in rental.
 - There is **no dump station** available at this site.
 - Clarcona Horse Park has one group camping site.
 - This site can accommodate up to 25 campers.
 - Electricity is not available. A restroom facility with showers is available.
 - For more information on group camping, go to page 22.
 - **While Park is closed, campers must remain within campground areas only. Park common areas and amenities are CLOSED.**
- Park Information
 - Clarcona Horse Park is for public equestrian use. The site offers show rings with bleacher seating, judging towers and horse stalls. Dressage show rings are also available. Links to 22-mile West Orange Trail with equestrian path.
 - There is no park admission fee.
 - Pets are allowed if properly registered.
 - Rental Facilities are available, please contact staff for more information.

- Park Campground Map



• Park Map



Kelly Park/Camp Joy

400 East Kelly Park Road
Apopka, FL 32712

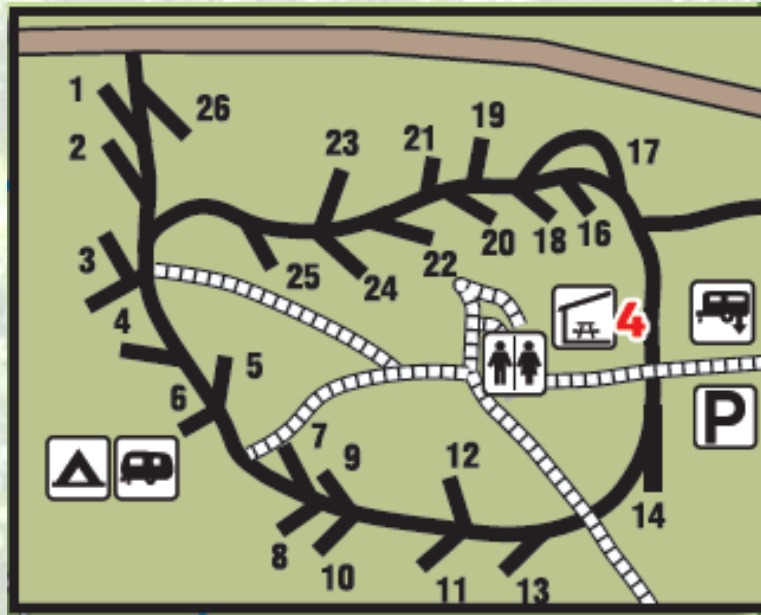
KellyCamping@ocfl.net

For general information only: 407-254-1902

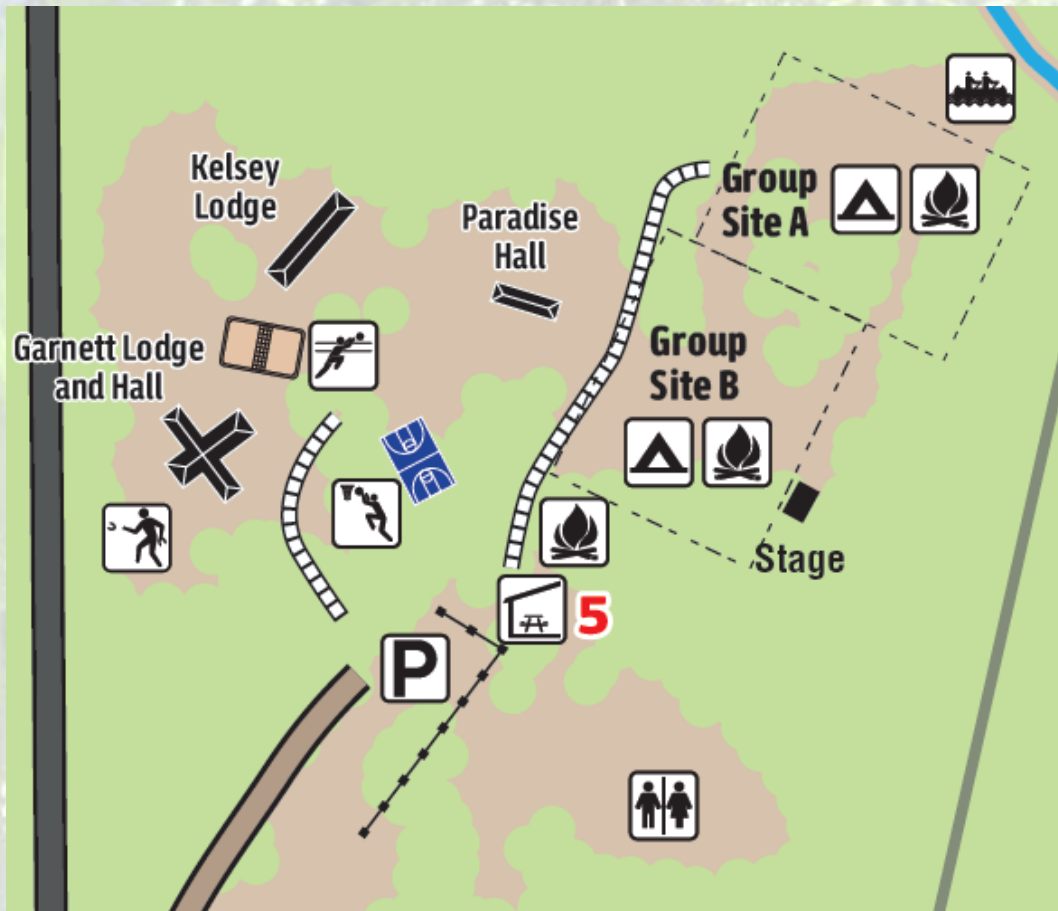


- Available Camping
 - Kelly Park has 25 RV/tent sites.
 - Campsites have a picnic table, fire ring with grill.
 - Water and electricity are included in rental.
 - A dump station is available free of charge for registered campers.
 - The Kelly Park entrance fees are included in the per night camping charge (up to 6 campers).
 - Camp Joy has 2 Group sites.
 - Group site A; maximum 150 campers,
 - Group site B; maximum 150 campers,
 - Both sites can be combined to accommodate up to 300 campers.
 - Electricity is not available. A restroom facility with showers is available.
 - Camp Joy also offers Lodge camping, for groups of 12 or more.
 - For more information on group camping, go to page 22.
 - **While Park is closed, campers must remain within campground areas only. Park common areas and amenities are CLOSED.**
- Park Information
 - For general inquiries and group camping, email the park at KellyCamping@ocfl.net.
 - The 255-acre Kelly Park was donated by Dr. Howard A. Kelly in 1927 for use as a public park, wildlife preserve and bird sanctuary. Located within the park, Rock Springs—a natural free-flowing spring—travels nine miles to the Wekiva River. The spring maintains an average flow of 26,000 gallons per minute with a constant 68 degree temperature. Enjoy swimming, hiking, and picnicking during your stay.
 - Camp Joy, adjacent to Kelly Park, is a 34-acre paradise surrounded by lush vegetation and adjacent to Rock Springs Run. The site is perfect for large groups but small enough to afford a natural experience. Camping fees at Camp Joy include entry into Kelly Park.
 - Canoe launching is permitted from Camp Joy. Entry fees are applicable and a *Kayak/Canoe Launch Form* must be completed in advance. Please contact the park for more information. (Canoe/Kayak launch located approximately 900 ft from parking area)

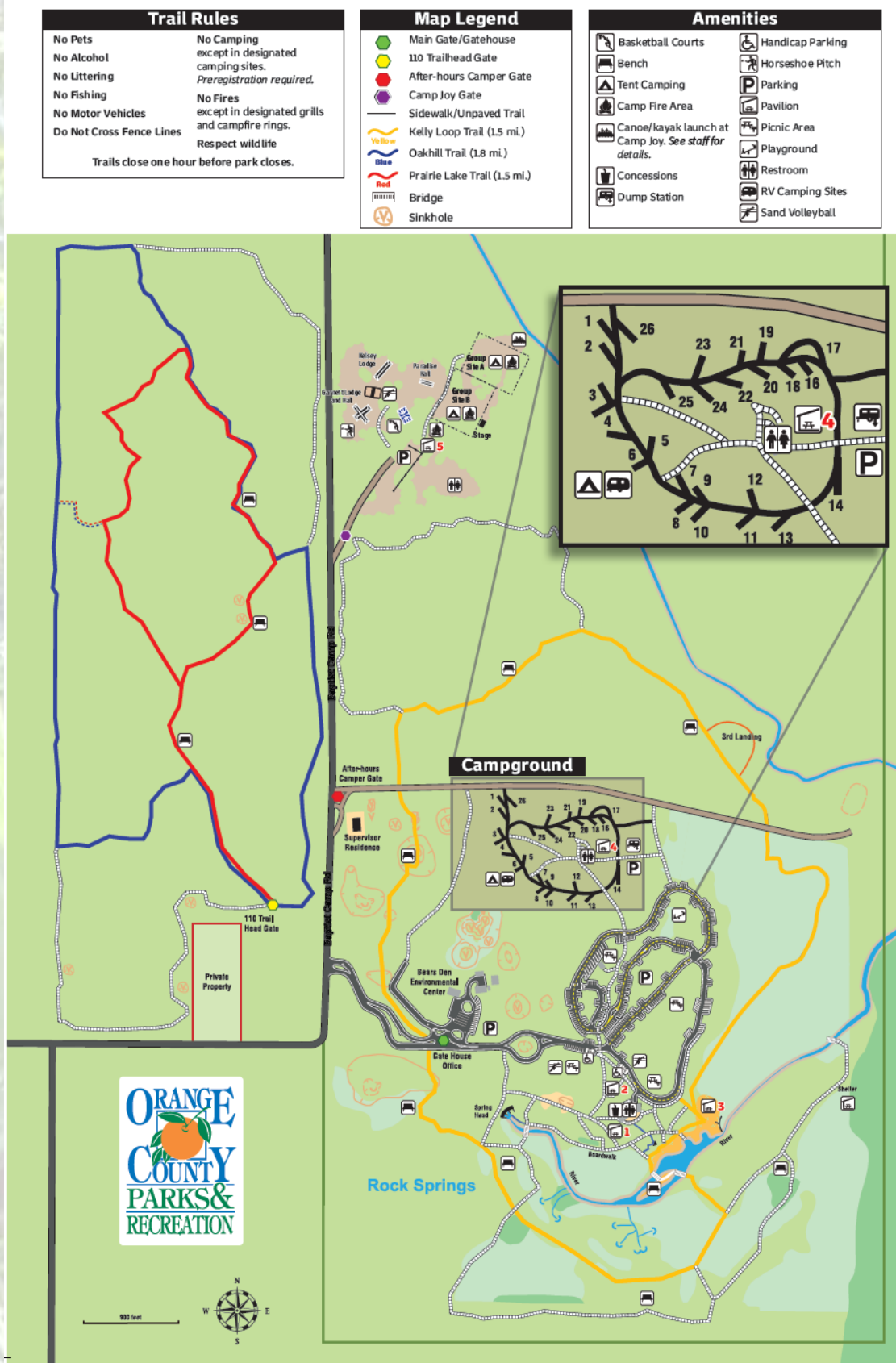
- Kelly Park Campground Map



- Camp Joy Map



- Kelly Park Map



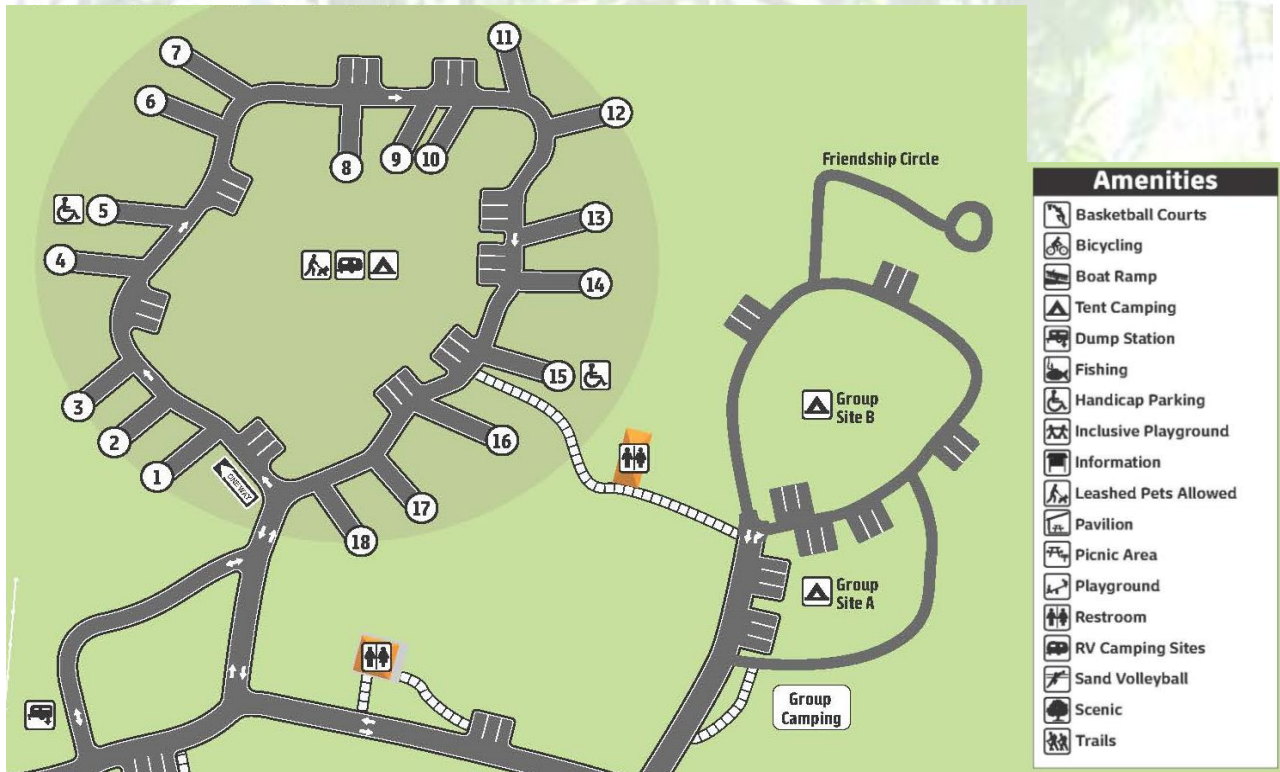
Magnolia Park

2929 South Binion Road
Apopka, FL 32703
407-254-9046

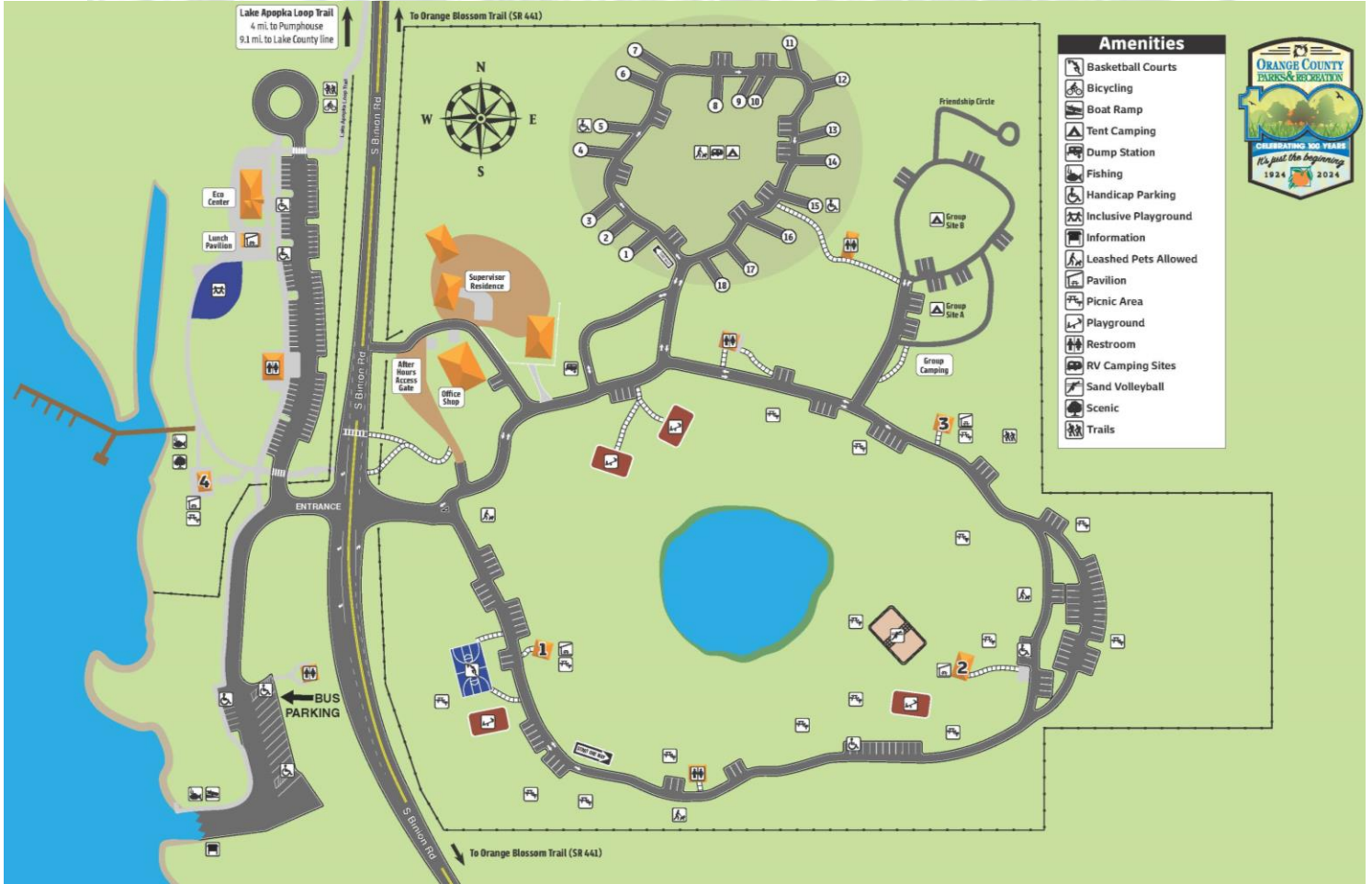


- Available Camping
 - Magnolia Park has 18 RV/tent sites.
 - All campsites have fire rings, grills, picnic tables, lantern hangers.
 - Water and electricity are included in rental.
 - A dump station is available free of charge for registered campers.
 - Magnolia Park has 2 group sites.
 - Group site A; maximum 35 campers
 - Group site B; maximum 65 campers
 - Both sites can be combined to accommodate up to 100 campers.
 - Electricity is not available. A restroom facility with showers is available.
 - Camp sites have campfire rings, picnic tables, garbage cans, lantern hangers and water.
 - For more information on group camping, go to page 22.
 - **While Park is closed, campers must remain within campground areas only. Park common areas and amenities are CLOSED.**
- Park Information
 - The fifty-six acres that make up Magnolia Park was deeded to Orange County in 1962.
 - The Magnolia Eco Education Center, inclusive playground, fishing pier, dock, pavilion, and restrooms are available during Park Operational hours. Educational programming available with advance registration.
 - A half-mile paved roadway wraps around the perimeter of the park and the Lake Apopka Loop Trail offers 29.2 roundtrip miles—perfect for walking and bicycling.
 - A free 24-hour access boat ramp on Lake Apopka is available for public use.
 - Pets are allowed if properly registered.
 - There is no park admission fee.

- Park Campground Map



- Park Map



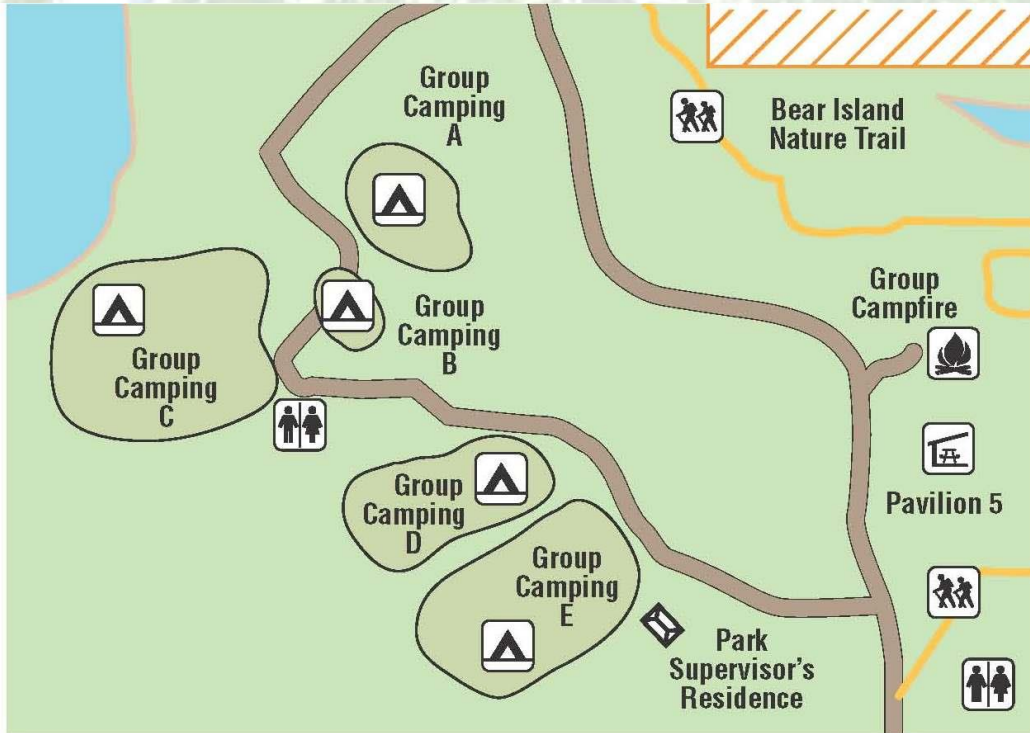
Moss Park

12901 Moss Park Road
Orlando, FL 32832
407-254-6840

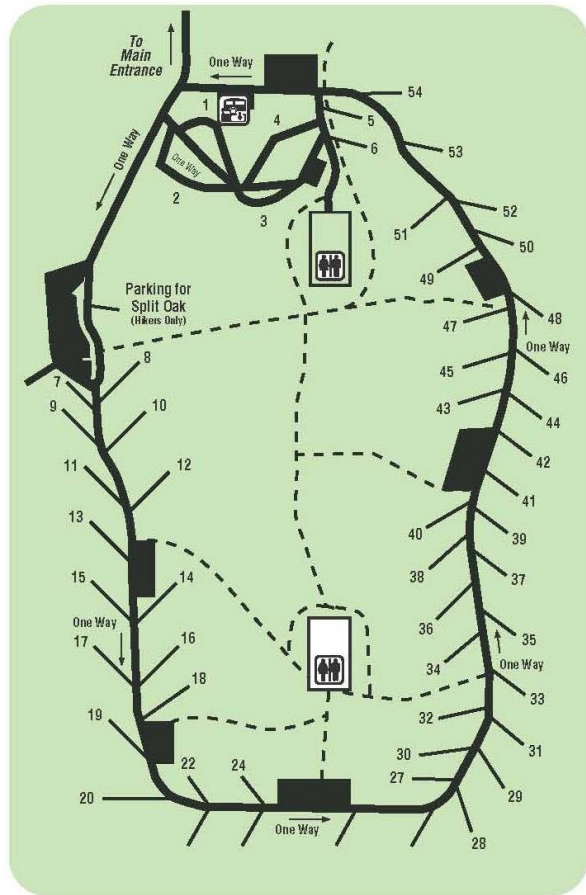


- Available Camping
 - Moss Park has 54 RV/tent sites.
 - All campsites have fire rings, grills, picnic tables.
 - Water and electricity are included in rental.
 - A dump station is available free of charge for registered campers.
 - The Moss Park entrance fees are included in the per night camping charge (up to 6 campers).
 - Sites #1-4 are designated family campsites. There is a maximum of 18 individuals allowed per site.
 - Moss Park has five primitive group sites available.
 - A through E, which can accommodate up to 320 campers when combined.
 - Sites are assigned relevant to the number of campers your organization plans to bring.
 - Electricity is not available. A restroom facility with showers is available.
 - For more information on group camping, go to page 22.
 - **While Park is closed, campers must remain within campground areas only. Park common areas and amenities are CLOSED.**
- Park Information
 - Moss Park's 1551 acres is located between Lakes Mary Jane and Lake Hart. Enjoy boating, hiking, wildlife observation, biking, and other outdoor activities during your stay.

- Park Campground Map



Moss Park



- Park Map





Trimble Park

5802 Trimble Park Road

Mt. Dora, FL 32757

407-254-1982

- Available Camping
 - Trimble Park has 15 RV/tent sites.
 - Campsites have a picnic table, fire ring with grill.
 - RV maximum length of 35' or maximum height of 12'
 - Water and electricity are included in rental.
 - A dump station is available free of charge for registered campers.
 - Trimble Park has one group camping site.
 - This site can accommodate up to 50 campers.
 - The area includes picnic tables, two covered shelters, three fire rings, BBQ grill and access to a canoe launch.
 - Electricity is not available. A restroom facility with showers is available.
 - For more information on group camping, go to page 22.
 - **While Park is closed, campers must remain within campground areas only. Park common areas and amenities are CLOSED.**
- Park Information
 - Trimble Park is a serene 71-acre natural resource park huddled on a peninsula nestled between Carlton and Beauclaire on the Harris Chain of Lakes. Named for Sadie Conner Trimble and her husband, R.D. Trimble, after their donation of park acreage to the County in 1926.
 - Enjoy boating, picnicking, hiking, and wildlife watching during your stay.

Park Campground Map



- Park Map



GROUP CAMPING

Orange County Campgrounds offer group camping opportunities for groups of 20 individuals or more. All sites have campfire rings, tables, garbage cans and access to restrooms with showers. Group Camping sites can be reserved up to one year in advance if secured with a \$3.00 per person deposit (minimum 20 campers, non-refundable).

Group camping sites are for tent camping only, no recreational vehicles allowed.

Group camping sites offer no electricity, available for primitive camping only.

It is the responsibility of the group leader to inform all group members of park rules and regulations. Any infractions of these rules, day, or night, will result in the immediate revocation of group camping privileges.

CLARCONA HORSE PARK

- One group site is available: maximum 25 campers.

KELLY PARK/CAMP JOY

- Two group sites are available at Camp Joy
 - Group site A; maximum 150 campers,
 - Group site B; maximum 150 campers,
 - Both sites can be combined to accommodate up to 300 campers.
- Lodge Camping at Camp Joy (Minimum rental for 12 individuals or the equivalent cost is required). Two lodges available with two bunk areas each:
 - Garnett Lodge
 - Dorm A; maximum 12 campers,
 - Dorm B; maximum 12 campers,
 - Counselor Room A – available at \$25/day,
 - Counselor Room B – available at \$25/day,
 - Kitchen and Dining Hall – Available at \$175/day,
 - Counselor Room and Kitchen rentals **are not** available without Dorm rentals.
 - Kelsey Lodge
 - Dorm A; maximum 14 campers,
 - Dorm B; maximum 14 campers.

MAGNOLIA PARK

- Two group sites are available:
 - Group site A; maximum 35 campers
 - Group site B; maximum 65 campers

MOSS PARK

- Five group sites are available, A through E, which can accommodate up to 320 campers when combined. Sites are assigned according to the number of campers in your reservation.

TRIMBLE PARK

- One group site is available: maximum 50 campers.



PET CAMPING

Orange County Parks and Recreation Division allows pets and pet camping in designated areas at **Magnolia Park, Clarcona Horse Park, and Trimble Park only**. Pet owners must follow Pet Camping Guidelines and meet Florida requirements for vaccination certification and tags. All other parks designated for camping allow service animals only per Division Rules and Regulations.

GUIDELINES

1. Registered Campers must complete a *Registration/Certification Form* for any pets accompanying them during their stay.
2. Service animals are welcome at all Orange County Parks.
3. A maximum of two (2) pets are permitted in any campsite.
4. Only domesticated species are considered pets. For the purposes of this Policy, horses or other equine species are not considered pets.
5. Per Orange County Ordinance, cats, dogs, and ferrets four (4) months of age or older shall be vaccinated against rabies. Campers should have a copy of this certification available upon check in. Pets less than four (4) months of age or those certified by a licensed veterinarian as not able to be vaccinated must be accompanied by this notice in written form provided by a licensed veterinarian. Campers should have a copy of this notice available at check in.
6. When on Orange County Parks and Recreation property, all pets (dogs, cats, ferret only) must have a current rabies vaccination tag displayed on its collar.
7. All dogs, cats and ferrets shall at all times be restrained and on adequate handheld leashes not greater than six (6) feet in length when not tethered at campsite.
8. Non fur-bearing pets (reptiles, birds, fish, etc.) must be confined or under the physical control of the owner. Captive wild species, whether native or non-native and barnyard animals, are prohibited.
9. No person shall tie any animal to any tree, plant, or any other structures not specified for that purpose, or leave them unattended at any time. Please tether your pet(s) to personal property at your campsite—you are responsible for your pet(s) and the actions of your pet(s) at all times.
10. Pets must be confined with the owner, in the owner's camping unit during park quiet hours, 10 p.m.-6 a.m. unless under the owner's control off of the campsite.
11. Local animal control officers will be contacted to address pets suspected of being abandoned or neglected, including pets left unattended within the confines of a recreational vehicle for longer than thirty (30) minutes. The owner is solely responsible for any costs associated with animal control services.
12. Per Orange County Ordinance, when dogs are tethered at the campsite the following must be obeyed:
 - a. Any restraining device (chain, cord, or cable) must be a minimum length of ten (10) feet and a maximum length as to not exceed the designated boundary of the reserved site.
 - b. The restraining device must not restrict the animal from having food, water, shelter, adequate ventilation, protection from the elements or general care.
 - c. The restraining device must be proportional in size and must weigh less than 1/8 of the dog or puppy's body weight.

- d. The restraining device must be designed for the specific breed (where applicable) and must be used with an appropriate collar.
 - e. Do not use restraining devices during extreme weather (e.g. below freezing conditions).
13. No pets shall be washed with or without soap or other cleansers in the park.
14. In compliance with the regulations of the State Board of Health, all pets are excluded from all swimming areas and beaches. Pets should not be permitted to swim on a leash at non-designated swimming areas e.g. waterfronts and boat ramps. Because dogs and cats attract the interest of alligators and are similar in size to the natural prey of these reptiles, do not allow pets to swim, exercise, or drink in or near park waters.
15. Pets will be excluded from any place where food and drinks are sold.
16. No animals or pets are permitted in or on covered pavilion areas, playgrounds, concession areas, and bleachers where contamination of food or play surfaces is a potential.
17. Owner shall remove their animal feces from the Park and/or encase and deposit in appropriate waste containers. Animal feces left in the Park can spread deadly disease to our local wildlife populations.
18. No person shall disobey posted notice prohibiting feeding mammal, reptile, or bird, either wild or domestic, on park property. All food bowls must be attended to and removed from the out-of-doors when pets are not present. Both Trimble and Magnolia Parks are in known bear habitat. Anything that smells like food and can be easily accessed is a potential bear attractant. To prevent pet/bear interactions, please be mindful of pet food accessibility during night-time hours.
19. Any pet that is noisy, dangerous, intimidating, or destructive as determined by Park Management will not be permitted to remain in the park.
20. Pet Safety tips from Orange County Animal Services:
 - a. It takes only minutes for a pet left in a vehicle on a warm day to succumb to heatstroke and suffocation. Temperatures inside a car easily reach more than 160 degrees if parked in the Florida sun.
 - b. Even when the outside air temperature is in the 60s, temperatures inside some vehicles can reach dangerous temperatures on bright, sunny days. So many experts recommend not leaving pets in parked cars even for short periods if the temperature is in the 60s or higher.
 - c. Rolling down a window or parking in the shade does not guarantee protection either, since temperatures can still climb. And if the window is rolled down sufficiently, the pet can escape. Plus if a passer-by claims he or she was bitten through the car window, the pet owner may be liable.
 - d. Animals are not able to sweat like humans. Dogs cool themselves by panting and by sweating through their paws. If they have only overheated air to breathe, animals can collapse, suffer brain damage, and possibly die of heatstroke. Less than 15 minutes can be enough for an animal's body temperature to climb from a normal 102.5 to deadly levels that will damage the nervous and cardiovascular systems, often leaving the animal comatose, dehydrated and at risk of permanent impairment or death.
 - e. Precautions
 - i. Leave your dog at home during warm days.
 - ii. Do not run errands with your pet. If an unexpected stop occurs, do not leave your pet unattended in the car/camper.
 - iii. On trips with your pet, bring plenty of fresh drinking water and a bowl.

- iv. If you see signs of heat exhaustion take the dog into the shade, an air-conditioned area, or to your veterinarian. Signs of heatstroke include: restlessness, excessive thirst, heavy panting, lethargy, dark tongue, rapid pulse, fever, vomiting, glazed eyes, dizziness, or lack of coordination. To lower body temperature, gradually give the animal water to drink, place a cold towel or ice pack on the head, neck, and chest, and/or immerse the dog in cool (not cold) water.



We embrace the power of diversity. Orange County Parks and Recreation does not discriminate against anyone on the basis of age, race, gender, national origin or disability.

ANY SPECIAL NEEDS PLEASE CALL.

Examples of Approved Recreation Vehicles/Equipment

- Campsites sizes vary, larger vehicles may not fit all campsites, consult site for more information.



Pop up

Dome

Geodesic



Tunnel

Inflatable

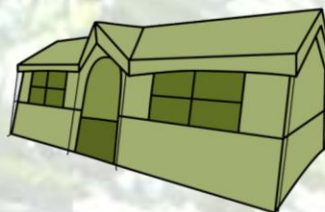
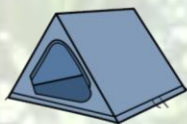
Teepee



A-Frame

Multi-Room

Backpacking



Low-Speed Vehicles (LSVs)

Florida Department of Highway Safety and Motor Vehicles

Guide to Owning LOW SPEED VEHICLES

A low speed vehicle (LSV) is a vehicle with a top speed greater than 20 MPH, but not greater than 25 MPH. **LSVs must be registered, titled and insured** with personal injury protection (PIP) and property damage liability (PDL) insurance. **Any person operating an LSV must have a valid driver license. LSVs may only be operated on streets where the posted speed limit is 35 MPH or less.**

LSVs must be equipped with the following safety equipment:

